



Slight Cowering



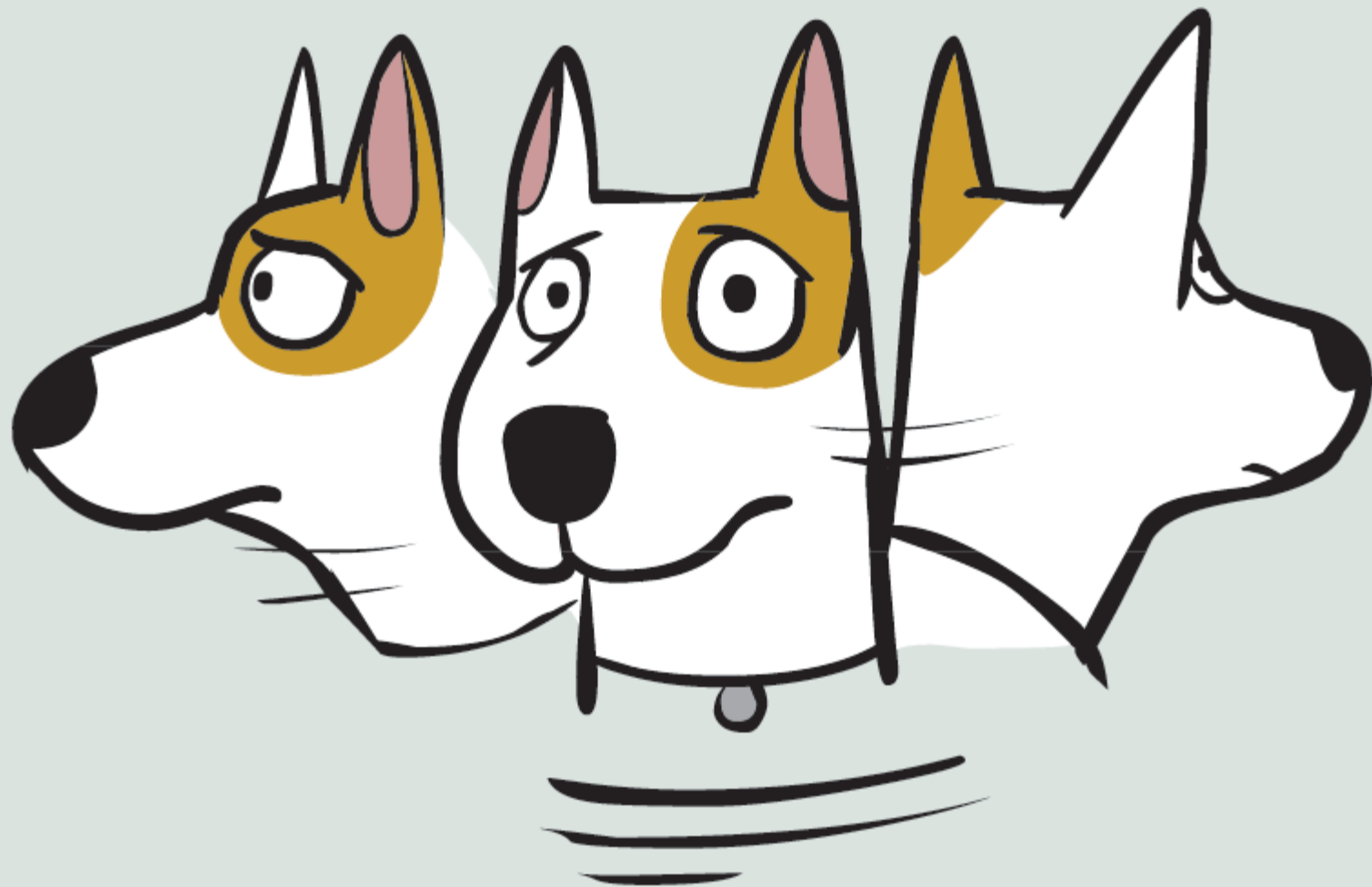
Licking Lips
when no food nearby



Panting
when not hot or thirsty



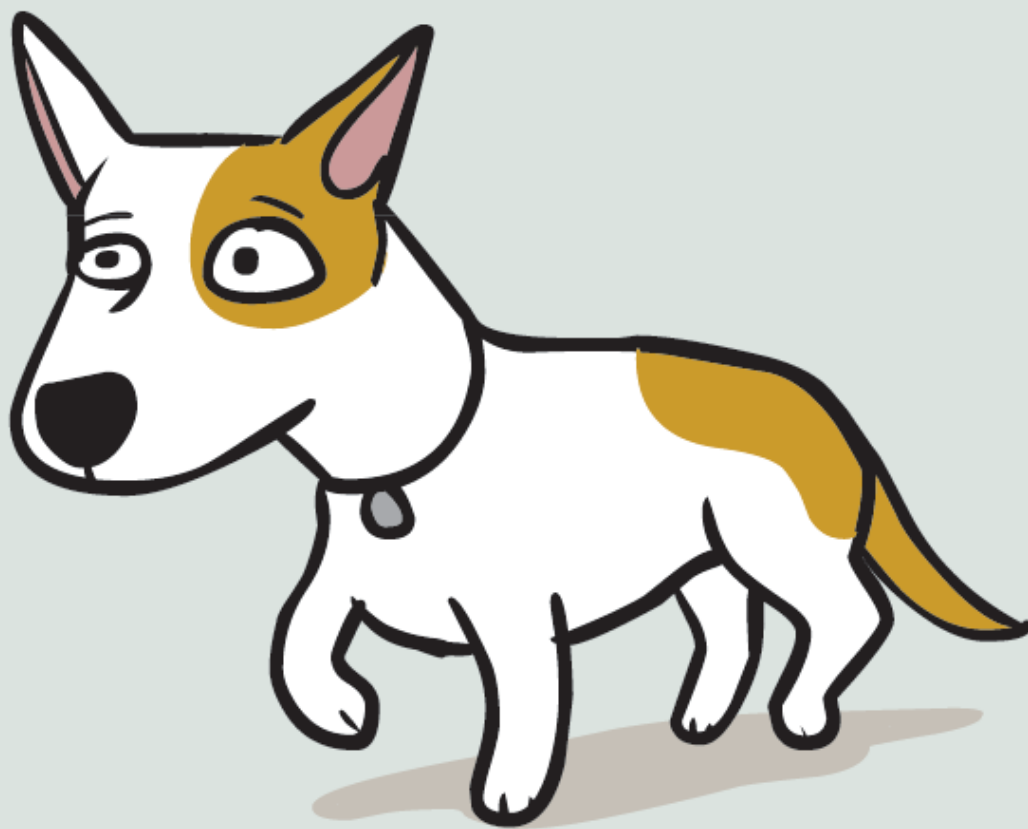
Brows Furrowed, Ears to Side



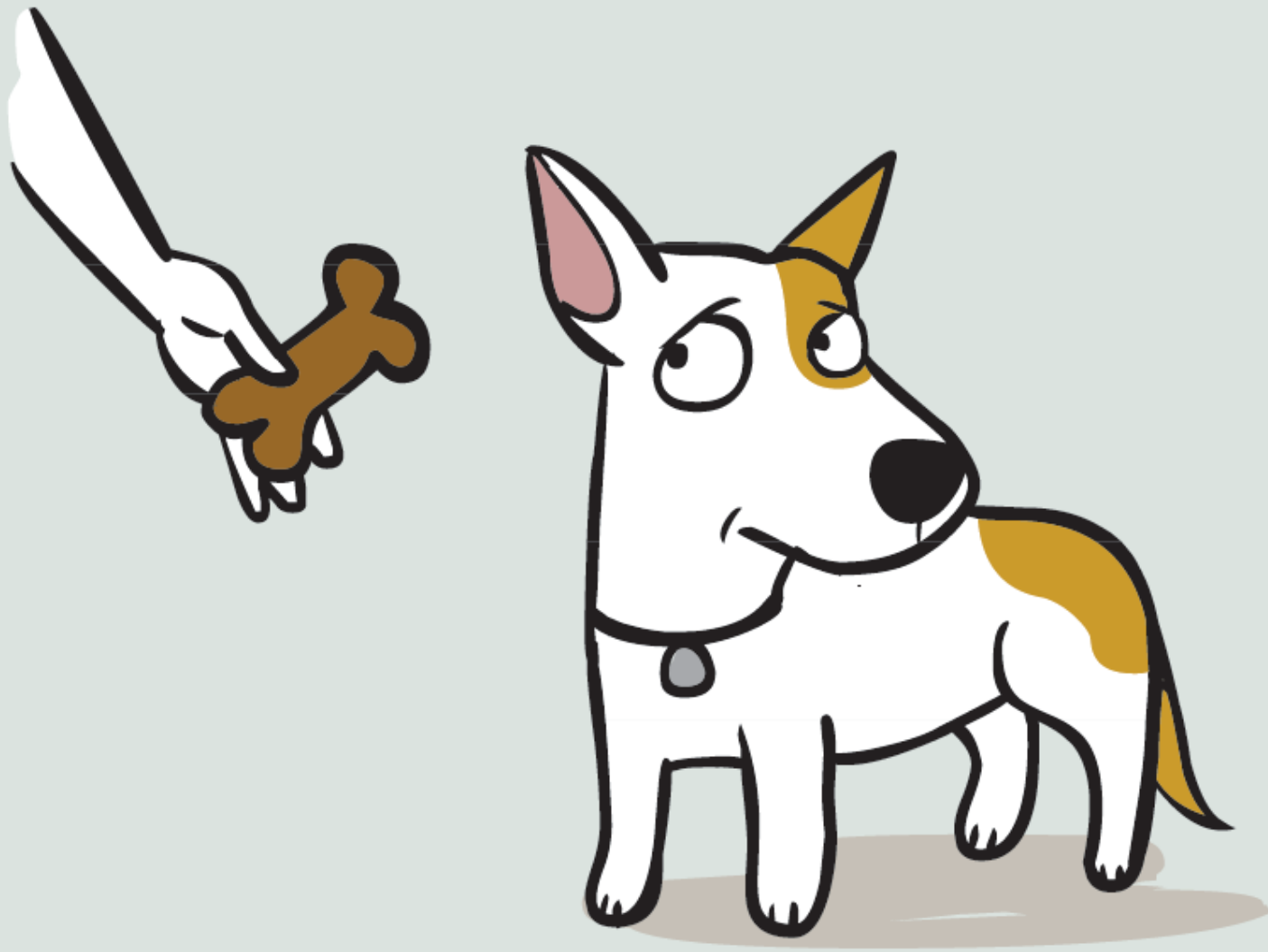
Hypervigilant
looking in many directions



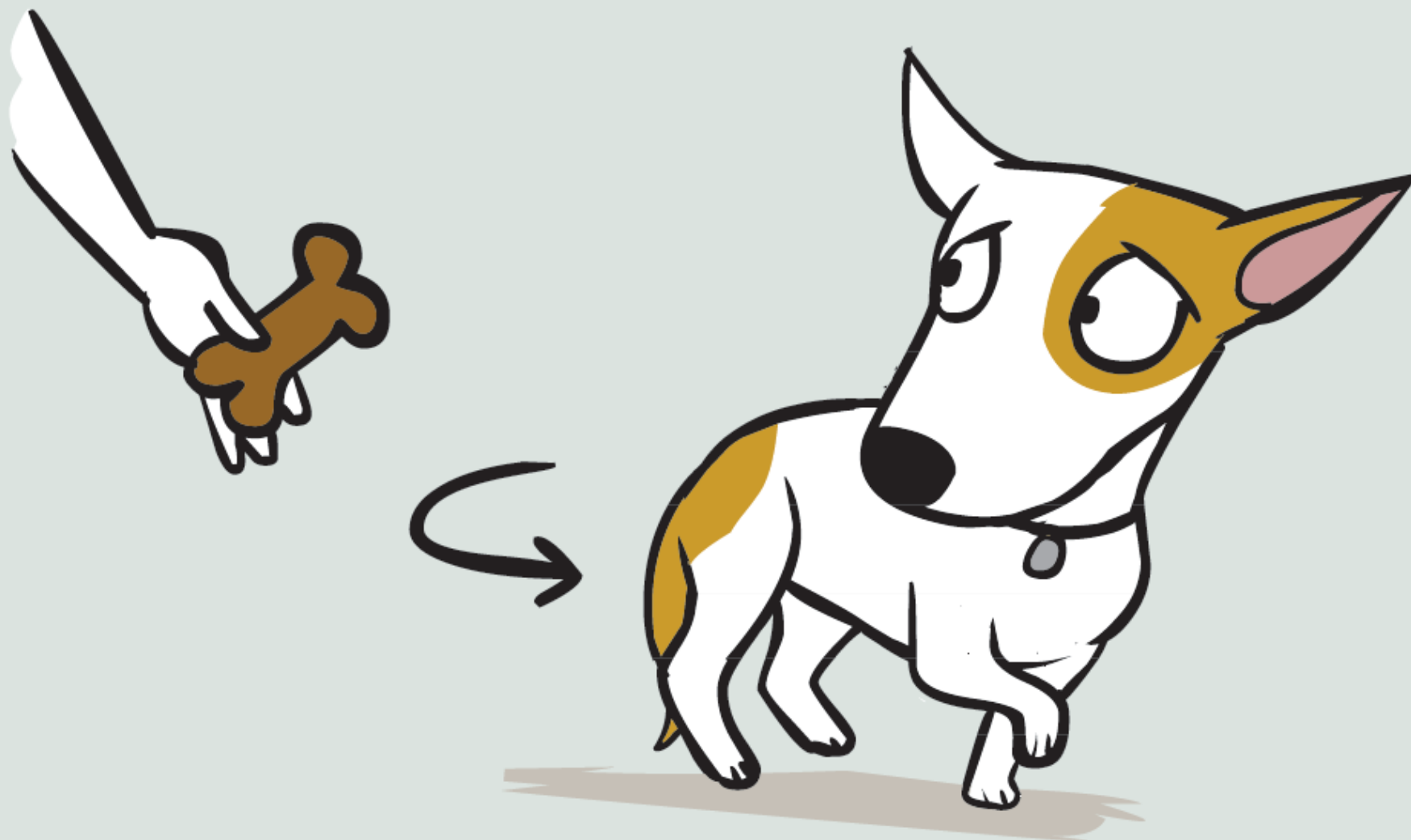
Acting Sleepy or Yawning
when they shouldn't be tired



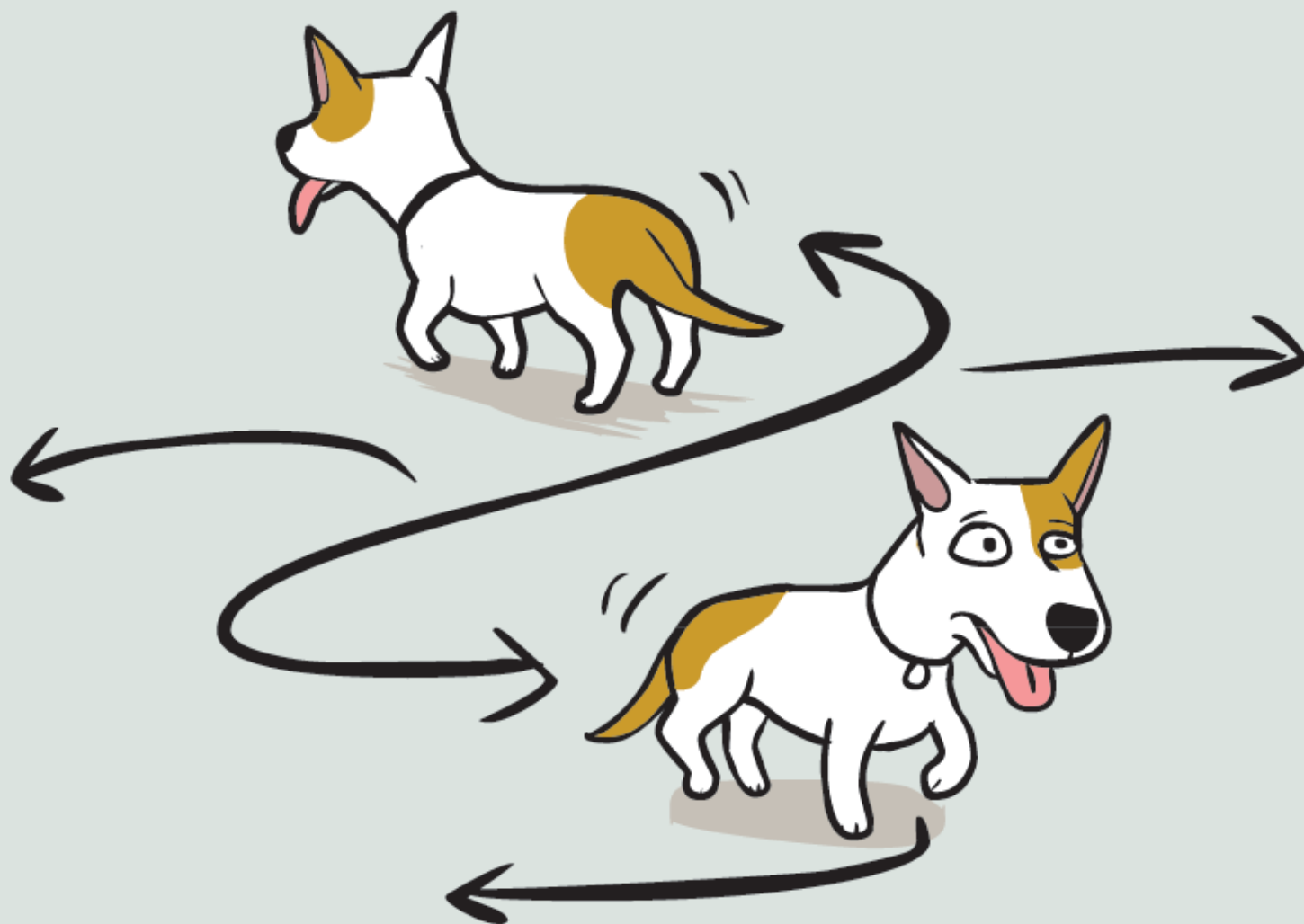
Moving in Slow Motion
walking slow on floor



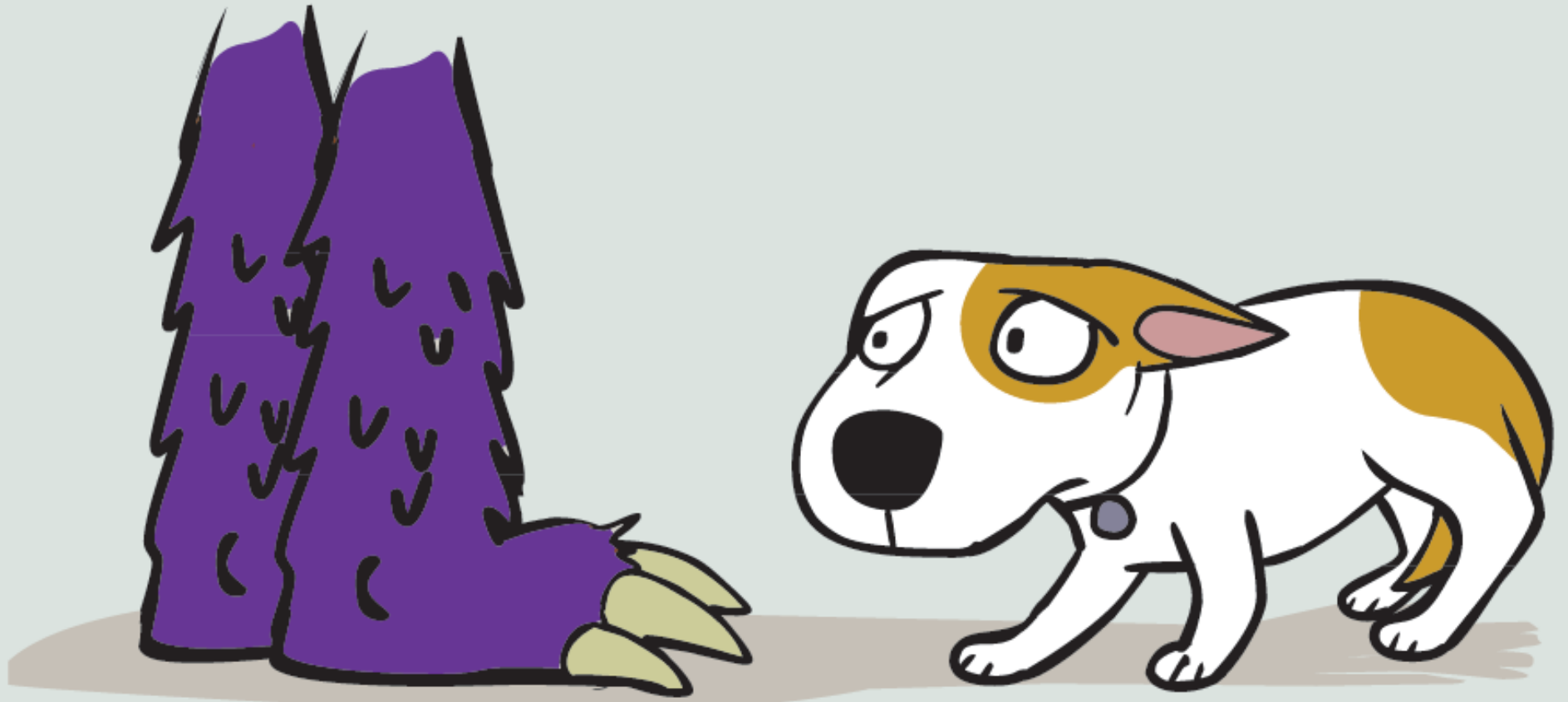
Suddenly Won't Eat
but was hungry earlier



Moving Away



Pacing



Major Cowering